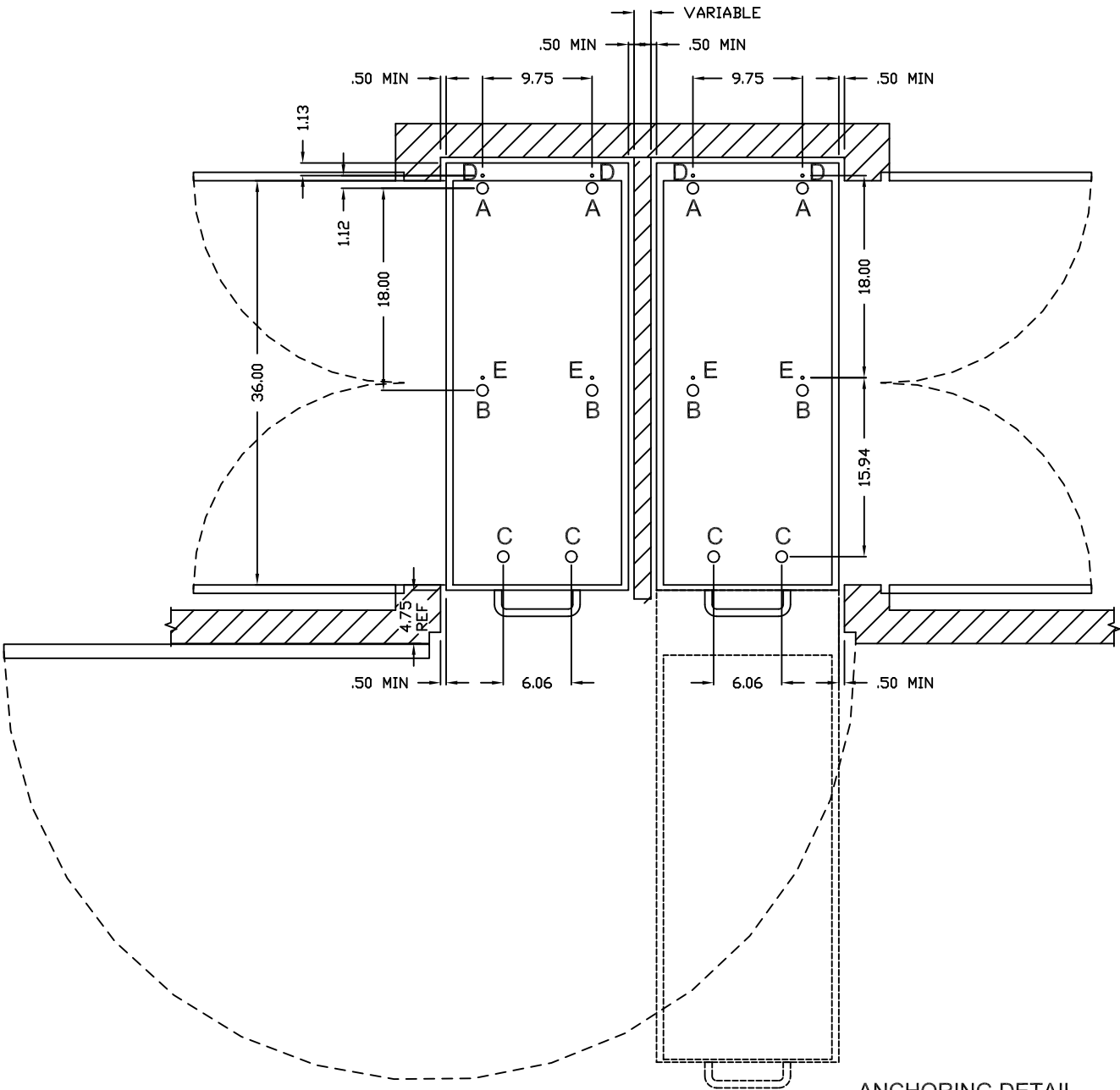


DWG NO.			SH	REV	1	
REVISIONS						
ECO NO.	ZONE	REV	DESCRIPTION			DATE
			APPROVED			

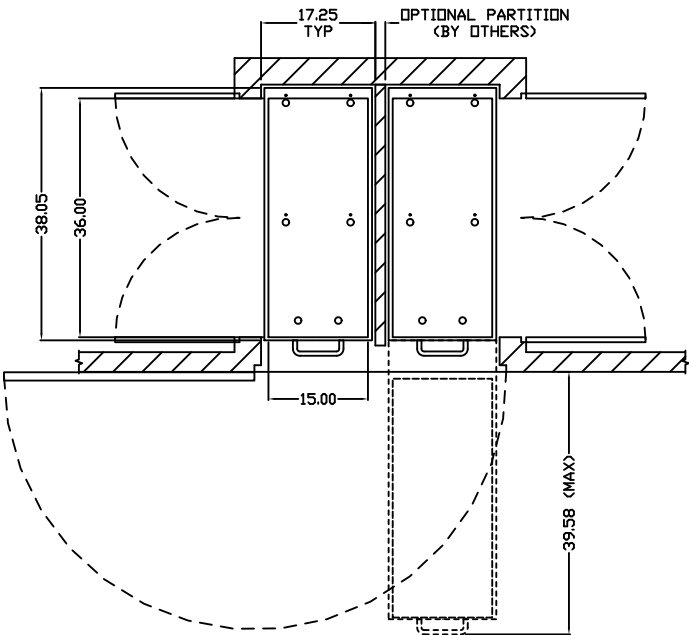
ENCLOSURE CONSTRUCTION GUIDELINES

- NOTES:
- 1.) CABINET/CLOSET AND MOUNTING SURFACE BY OTHERS.
  - 2.) LOCAL FIRE CODES MAY APPLY. THE RESPONSIBILITY TO ENSURE APPLICABLE CODES HAVE BEEN MET IS THAT OF OTHERS.
  - 3.) DOORS, WALLS, AND WALL THICKNESSES SHOWN ARE FOR ILLUSTRATIVE PURPOSES ONLY. ACTUAL DIMENSIONS TO BE FINALIZED BY OTHERS.
  - 4.) DIMENSIONS SHOWN ARE TO PROVIDE FINISHED OPENING SIZES ONLY AND INCLUDE RECOMMENDED MINIMUM CLEARANCES.  
(DIMENSIONS SUBJECT TO CHANGE WITHOUT NOTICE.)

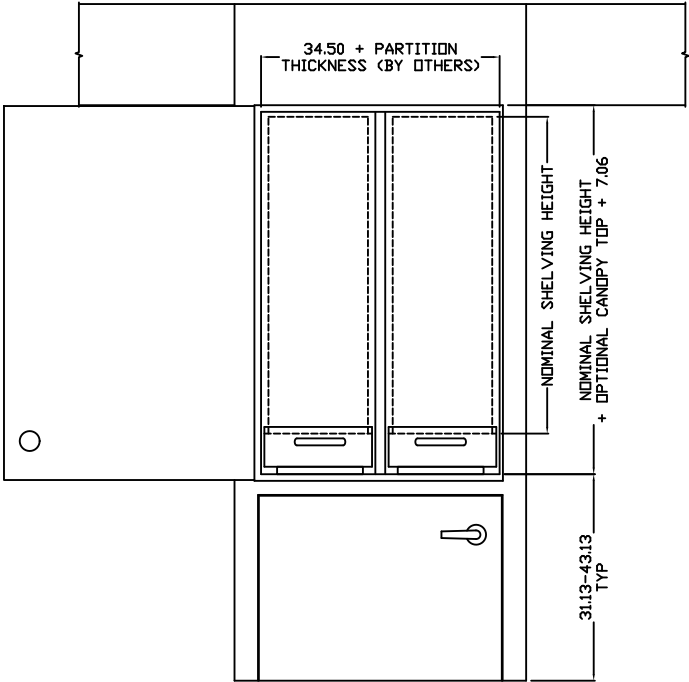
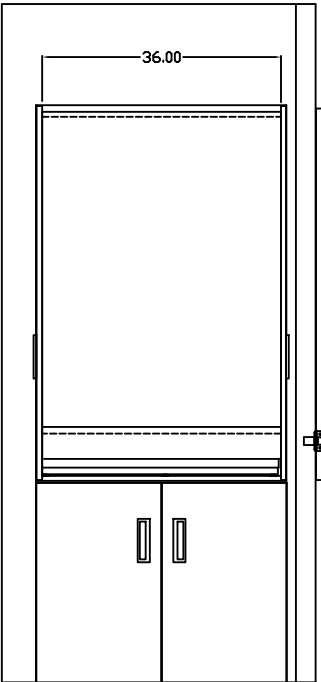


ANCHORING DETAIL  
SCALE 2:1

SPLIT DOUBLE  
2 - 15 x 36 BASE UNIT CARRIAGES



FINISHED OPENING

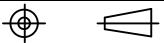


FORCES AT BOLT POINTS & FOOT POINTS

SYSTEM CONFIG	CARRIAGE WIDTH	CARRIAGE LENGTH	'WORST CASE' FORCE REQUIREMENTS				
			LEVELER 'A' SUPPORT	LEVELER 'B' SUPPORT	LEVELER 'C' SUPPORT	ANCHOR 'D' (PULL OUT)	ANCHOR 'E' (PULL OUT)
DUAL ENTRY DUAL CARR	15"	24"	400#	74#	900#	350#	650#
	15"	30"	400	74	900	350	650
	15"	33.7"	400	74	900	350	650
	15"	36"	400	74	900	350	650

\*FORCES CALCULATED PER BOLT  
(SHELF WEIGHT = 15lb/ft LENGTH-WIDTH, UNIFORMLY DISTRIBUTED)  
ANCHORS TO BE Ø 5/16"-18 GRADE 5 THREADED BOLTS  
DO NOT USE WOOD AS A MOUNTING SUBSTRATE TO AVOID LONG TERM INDENTING

TOLERANCES UNLESS OTHERWISE SPECIFIED  
.XX±.01  
.XXX±.005  
X°±1°



DWN BY  
SRI  
DATE  
1/26/09

APVD  
DATE

Spacesaver  
FORT ATKINSON WISCONSIN

TITLE

CoreSTOR™ PATIENT SERVER  
SPLIT DOUBLE 15 X 36 GUIDE

SIZE

D

SCALE

NTS

FSCM NO.

58928

DWG NO.

CoreSTOR SD 15x36

SHEET

OF

REV

A

COPYRIGHT © 1999 SPACESAVER CORPORATION. ALL RIGHTS RESERVED.  
This material is proprietary and confidential, and the disclosure, reproduction (by photocopy, film, blueprint or otherwise) or incorporation into any information retrieval system without first receiving written approval from Spacesaver Corporation is expressly prohibited by law.